

# Eee Pad 快速使用指南

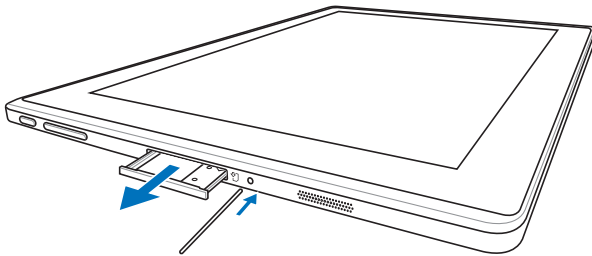
## TF101G 3G 連線設定



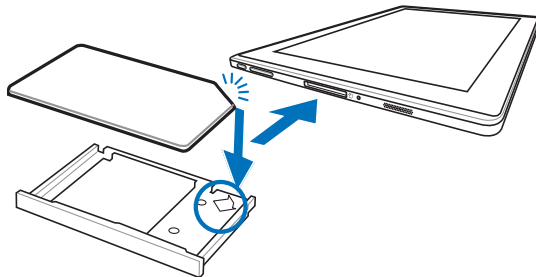
減少電磁波干擾影響，請參照手冊妥適使用。

### 安裝 SIM 卡

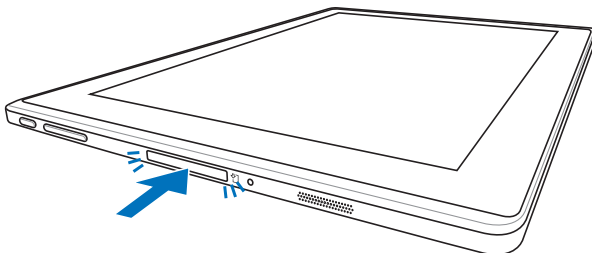
1. 請使用迴紋針按壓 SIM 卡插槽旁的退出按鈕。

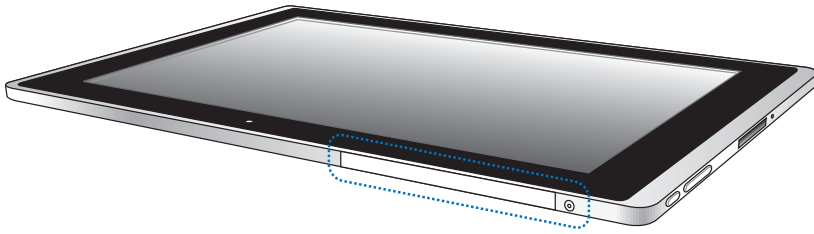


2. 請將托盤由插槽中取出，將 SIM 卡水平放置於托盤上。



3. 將托盤推入 SIM 卡插槽內，並推至底部。





3G 天線位於 Eee Pad 的機身上方。

## APN 設定

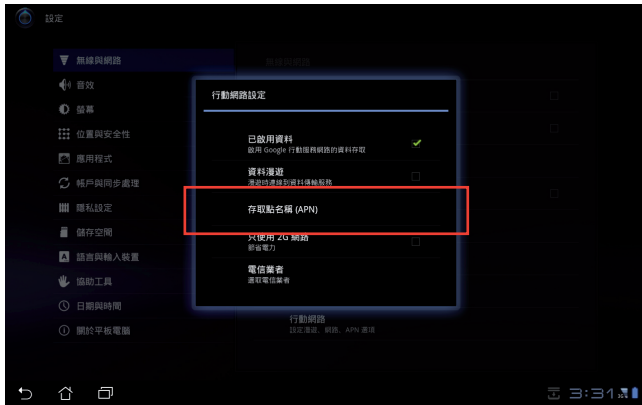
在您安裝 SIM 卡後，Eee Pad 將自動偵測並進行 3G 連線。若是 Eee Pad 未進行自動設定時，請依照以下的說明於 Eee Pad 上手動設定存取點名稱（APN）。

請依照以下步驟進行 APN 設定：

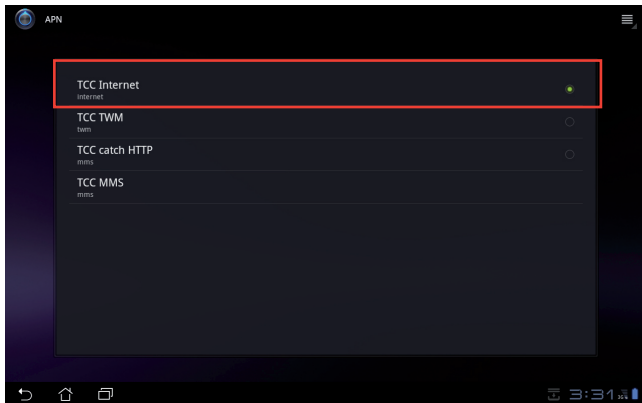
1. 請由桌面右上角點選 **應用程式** 並選擇 **設定**。
2. 請點選 **無線與網路** 並選擇 **行動網路**。



3. 請點選 存取點名稱 (APN) 。



4. 請選擇您的電信業者。



5. 請連絡您的電信業者詢問 APN 的相關資訊並填寫以下欄位，請捲動捲軸檢視完整資訊。



APN 設定的欄位依電信業者而異，通常您需要填寫 APN、MMSC、MMS proxy、MCC 和 MNC。



當 Eee Pad 同時使用無線網路與 3G 連線時，無線網路擁有優先權，Eee Pad 會透過無線網路連線至網際網路。若您欲使用 3G 連線時請先關閉無線網路功能。

# 附錄

## RF Exposure information (SAR)

THIS MODEL MEETS INTERNATIONAL GUIDELINES FOR EXPOSURE TO RADIO WAVES.

Your mobile device is radio transmitter and receiver. It's designed not to exceed the limits for exposure to radio waves recommended by international guidelines. These guidelines were developed by the independent scientific organization ICNIRP and include safety margins designed to assure the protection of all persons, regardless of age and health.

The guidelines use a unit of measurement known as the Specific Absorption Rate, or SAR. The ICNIRP SAR limits for mobile devices used by the general public are as follows:

### **Eee Pad TF101G**

Max. SAR Measurement (10g)

GSM 900: 1.38 W/kg

GSM 1800: 0.907 W/kg

WCDMA I: 1.19 W/kg

WCDMA VIII: 1.27 W/kg

WLAN 2.4G: 0.153 W/kg

This equipment may be operated in:							
AT	BE	BG	CH	CY	CZ	DE	DK
EE	ES	FI	FR	GB	GR	HU	IE
IT	IS	LI	LT	LU	LV	MT	NL
NO	PL	PT	RO	SE	SI	SK	TR

- **Products with 2.4–GHz Wireless LAN Devices France**

L'utilisation de cet équipement (2.4GHz wireless LAN) est soumise à certaines restrictions: cet équipement peut être utilisé à l'intérieur d'un bâtiment en utilisant toutes les fréquences de 2400 à 2483.5MHz (Chaîne 1–13). Pour une utilisation en environnement extérieur, les fréquences comprises entre 2400-2454 MHz (Chaîne 1-9) peuvent être utilisées. Pour les dernières restrictions, voir <http://www.art-telecom.fr>.

For 2.4–GHz wireless LAN operation of this product, certain restrictions apply. This equipment may use the entire–2400–MHz to 2483.5–MHz frequency band (channels 1 through 13) for indoor applications. For outdoor use, only 2400-2454 MHz frequency band (channels 1-9) may be used. For the latest requirements, see <http://www.art-telecom.fr>.

- **Wireless LAN Module's Maximum EIRP**

Frequency Ranges (MHz)	Indoors	Outdoors
2400 MHz ~ 2446.5 MHz	10mW	Not Permitted
2446.5 MHz ~ 2483.5 MHz	100mW	100mW on private property with Ministry of Defense approval.

- Users only use the charge with Adaptor, you can not use the connection to USB interfaces with USB 2.0 version or higher.
- Please make sure the temperature for adaptor will not be higher than 40 °C
- Please make sure the temperature for device will not be higher than 40 °C
- The device could be used with a separation distance of 0cm to the human body.
- The adaptor shall be installed near the equipment and shall be easily accessible.

# EC Declaration of Conformity



**We, the undersigned,**

<b>Manufacturer:</b>	ASUSTek COMPUTER INC.
<b>Address, City:</b>	No. 150, LI-TE RD., PEITOU, TAIPEI 112, TAIWAN R.O.C.
<b>Country:</b>	TAIWAN
<b>Authorized representative in Europe:</b>	ASUS COMPUTER GmbH
<b>Address, City:</b>	HARKORT STR. 21-23, 40880 RATINGEN
<b>Country:</b>	GERMANY

**declare the following apparatus:**

<b>Product name :</b>	<b>Notebook PC</b>
<b>Model name :</b>	<b>TF101G</b>

**conform with the essential requirements of the following directives:**

**2004/108/EC-EMC Directive**

<input checked="" type="checkbox"/> EN 55022:2006+A1:2007	<input checked="" type="checkbox"/> EN 55024:1998+A1:2001+A2:2003
<input checked="" type="checkbox"/> EN 61000-3-2:2006	<input checked="" type="checkbox"/> EN 61000-3-3:2008
<input type="checkbox"/> EN 55013:2001+A1:2003+A2:2006	<input type="checkbox"/> EN 55020:2007

**1999/5/EC-R &TTE Directive**

<input checked="" type="checkbox"/> EN 300 328 V1.7.1(2006-05)	<input checked="" type="checkbox"/> EN 301 489-1 V1.8.1(2008-04)
<input type="checkbox"/> EN 300 440-1 V1.4.1(2008-05)	<input type="checkbox"/> EN 301 489-3 V1.4.1(2002-08)
<input type="checkbox"/> EN 300 440-2 V1.2.1(2008-03)	<input type="checkbox"/> EN 301 489-4 V1.3.1(2002-08)
<input checked="" type="checkbox"/> EN 301 511 V9.0.2(2003-03)	<input checked="" type="checkbox"/> EN 301 489-7 V1.3.1(2005-11)
<input checked="" type="checkbox"/> EN 301 908-1 V3.2.1(2007-05)	<input type="checkbox"/> EN 301 489-9 V1.4.1(2007-11)
<input checked="" type="checkbox"/> EN 301 908-2 V3.2.1(2007-05)	<input checked="" type="checkbox"/> EN 301 489-17 V2.1.1(2009-05)
<input checked="" type="checkbox"/> EN 301 893 V1.4.1(2005-03)	<input checked="" type="checkbox"/> EN 301 489-24 V1.4.1(2007-09)
<input checked="" type="checkbox"/> EN 302 544-2 V1.1.1(2009-01)	<input type="checkbox"/> EN 302 326-2 V1.2.2(2007-06)
<input checked="" type="checkbox"/> EN 62311:2008	<input type="checkbox"/> EN 302 326-3 V1.3.1(2007-09)
<input type="checkbox"/> EN 50371:2002	<input type="checkbox"/> EN 301 357-2 V1.3.1(2006-05)
<input type="checkbox"/> EN 50385:2002	<input checked="" type="checkbox"/> EN 302 623 V1.1.1(2009-01)

**2006/95/EC-LVD Directive**

<input type="checkbox"/> EN 60950-1:2006	<input type="checkbox"/> EN 60065:2002+A1:2006+A11:2008
<input checked="" type="checkbox"/> EN 60950-1:2006+A11:2009	

**2009/125/EC-ErP Directive**

Regulation (EC) No. 1275/2008 <input checked="" type="checkbox"/> EN 62301:2005	Regulation (EC) No. 278/2009 <input checked="" type="checkbox"/> EN 62301:2005
Regulation (EC) No. 642/2009 <input type="checkbox"/> EN 62301:2005	Ver. 110101

**CE marking**



(EC conformity marking)

Position : **CEO**

Name : **Jerry Shen**

**Declaration Date: Jun. 10, 2011**

**Year to begin affixing CE marking:2011**

Signature : \_\_\_\_\_

